



**Panel Guard**

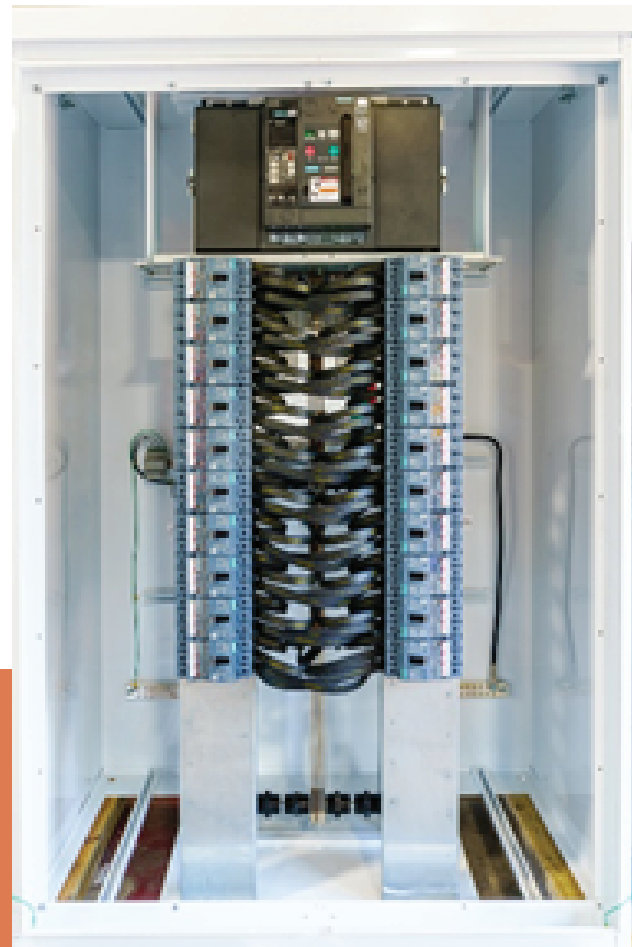
Breaker Panels from 1600A to 4000A

## UL 891 Certified Switchboards 1600A to 4000A

Main breaker switchboard platform for 415VAC through 600VAC Three Phase. Supporting a main breaker and up to 40 feeders in one of the most compact and cost competitive platforms on the market. Multiple feeder breaker size options and combinations available, with bus ampacities from 1600A to 4000A. MVT connections available by direct bus or by cable.



panel shown with deadfront



panel shown without deadfront

### Product Details

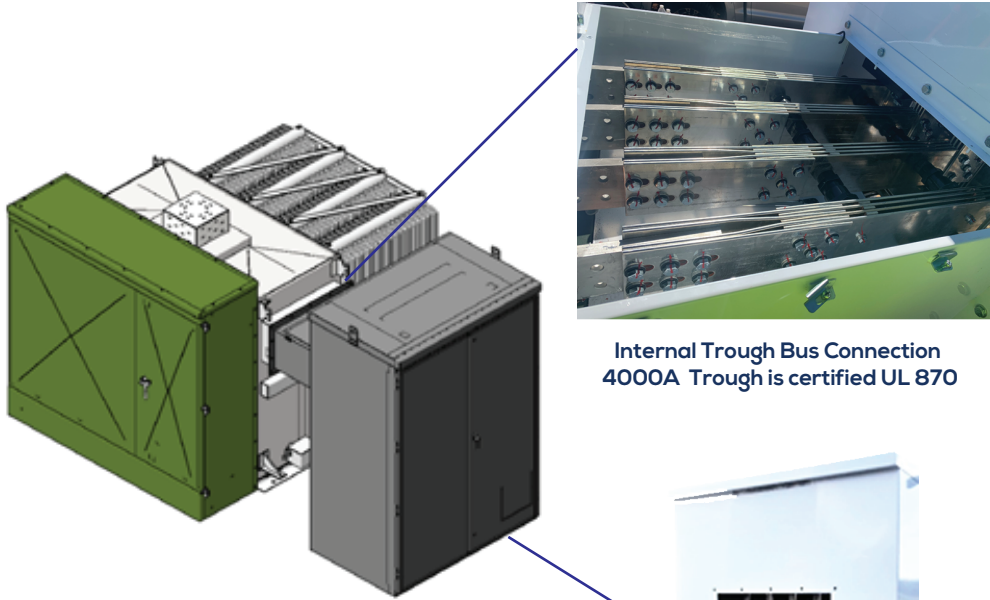
- 415 or 600VAC, 3PH, 4W (90"x 60"x 36")
- 1600A to 4000A main breaker / bus ratings
- Up to 3,000kVA transformer connection
- Main lug only option also available
- High density (up to 40 x 100AF) branch feeders
- Feeder ranges: 100AF, 150AF, 250AF, 400AF, 600AF, 800AF
- Feeder trip type: Thermal Mag or Electronic Trip
- Interrupt Ratings:
- 65kAIC @ 415 / 480VAC
- 50kAIC @ 600VAC

Designed & Assembled in the USA



**Panel Guard**  
Breaker Panels from 1600A to 4000A

## 480VAC – 600VAC BOS Equipment Custom Throated Transformer Connections



Internal Trough Bus Connection  
4000A Trough is certified UL 870

Pictured above: Single 600VAC, 4000A, UL / NEMA 3R UL 891 switchboard with close coupled bus connection to 3000kVA MV transformer.



Rear view of switchboard  
with throated connection opening

## Breaker Panel Enclosure Styles

Panel Guard Breaker panels are available in indoor NEMA 1, and outdoor NEMA 3R enclosures to ensure maximum compatibility with most applications.



## Product Details

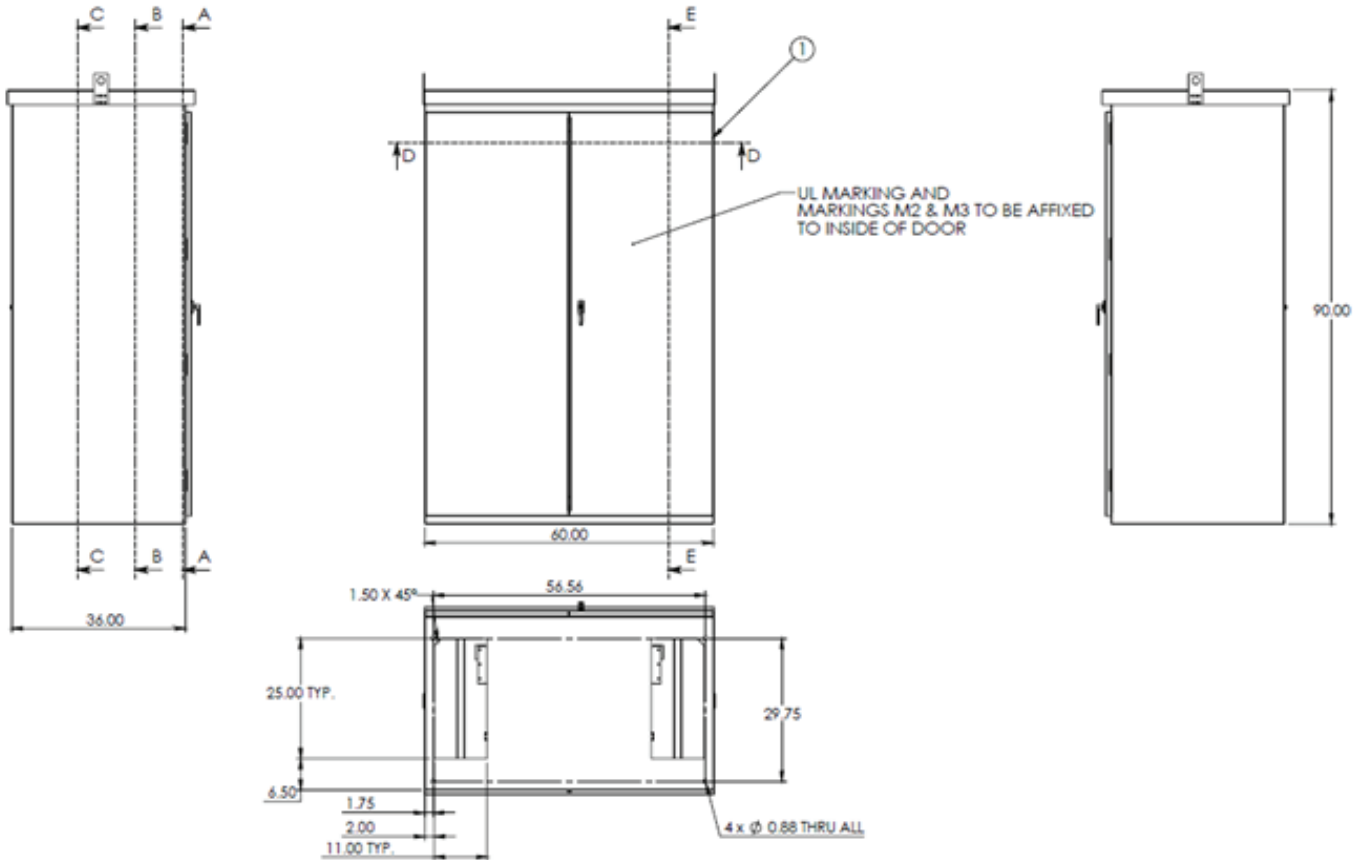
- MVT / block sizes: Up to 3,000kVA,
- Available with bare copper bus bars for MVT connection, or optional UL listed ERIFLEX flexible bus bars
- Steel equipment skids with MVT & Switchboard combined available

Designed & Assembled in the USA

Raptor Power Systems | (800) 258-0129 | [info@raptorpowersystems.com](mailto:info@raptorpowersystems.com)



## Specifications



<b>General</b>	Alignment	Front Access
	Service	Upt o 600VAC 3 Phase 4W
	Minimum Interrupt Rating	50kAIC (65kAIC @ 480VAC)
<b>Bus Specifications</b>	Bus Amps	1600A - 4000A
	Bus Bracing Interrupt Rating	50kAIC (65kAIC @ 480VAC)
	Neutral Amps	None
	Bus Material	Copper
	Ground Bus Mat	.25 x 2" (qty 2)
<b>Input</b>	Entry Point	Bottom
	Incoming Wire Size	Up to 350MCM, Cu/Al, landing on MCCBs directly
<b>Output</b>	Ountgoing Entry	Rear, hard buss connection to MVT through UL 3R trough, or direct cable connection to MVT.
<b>Structure</b>	Enclosure Type	NEMA 1 or NEMA 3R (non walk-in) flat roof
	Dimensions	90" x 60" x 36"
	Weight	2500lbs